



**2 Bedroom  
House - End  
Terrace  
located in Wyke  
Regis, Weymouth**

**Asking Price  
£255,000**



**1c Camp Road  
Weymouth  
DT4 9HE**

**Front door to:**

**Entrance Hallway**

Radiator. Under stairs storage cupboard housing wall mounted boiler. Stairs to first floor. Doors to:

**WC**

Low level WC and wall mounted wash hand basin. Double glazed window to front, radiator. Part tiled walls, tiled floor.

**Open Plan Lounge/Kitchen**

**Kitchen Area**

10'2 x 8'7

Range of wall and floor units with work surfaces over, inset sink unit. Built in hob, oven and hood. Built in washing machine, dishwasher and fridge/freezer. Double glazed window to front, radiator. Tiled floor.

**Lounge Area**

19'2 x 9'2 + 12'4 x 10'2

Double glazed window and doors to rear, radiator. TV aerial point.

**Landing**

Double glazed window to side. Loft access. Doors to all rooms.

**Bedroom One**

19'2 x 9'2 + 12'4 x 10'2

Two double glazed windows to rear, two radiators. TV aerial point.

**Bedroom Two**

10'4 x 8'8

Double glazed window to front, radiator. TV aerial point.

**Bathroom**

White suite comprising WC, wash hand basin and bath with

shower over. Double glazed window to front, heated towel rail. Part tiled walls, tiled floor.

**Outside**

There is an enclosed garden to the rear with an initial patio area and lawn. Side pedestrian access.

**Agents Note**

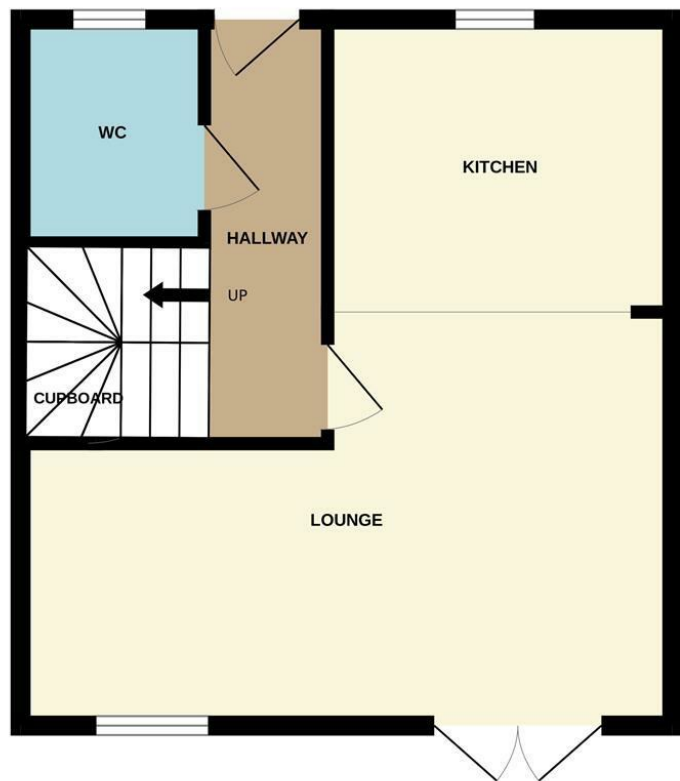
These particulars do not form part of any offer or contract and must not be relied upon as statements or representations of fact. Any areas, measurements or distances are approximate. The text, photographs, plans and measurements are for guidance only and are not necessarily comprehensive.



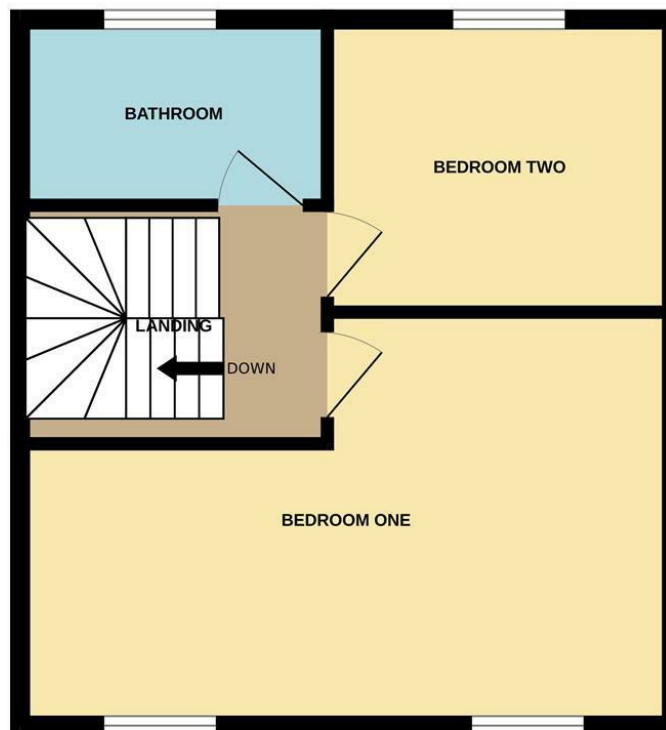




GROUND FLOOR



1ST FLOOR

**CONTACT**

11 Frederick Place  
St Thomas Street  
Weymouth  
Dorset  
DT4 8HQ

E: [admin@rogermcghee.co.uk](mailto:admin@rogermcghee.co.uk)  
T: 01305 779655  
[www.rogermcghee.co.uk](http://www.rogermcghee.co.uk)

Whilst every attempt has been made to ensure the accuracy of the floorplan contained here, measurements of doors, windows, rooms and any other items are approximate and no responsibility is taken for any error, omission or mis-statement. This plan is for illustrative purposes only and should be used as such by any prospective purchaser. The services, systems and appliances shown have not been tested and no guarantee as to their operability or efficiency can be given.  
Made with Metropix ©2025

